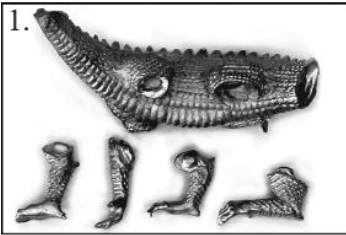


SMAUG TRIUMPHANT

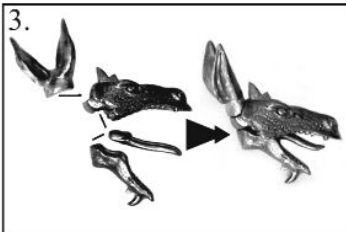
Dragon Assembly Guide



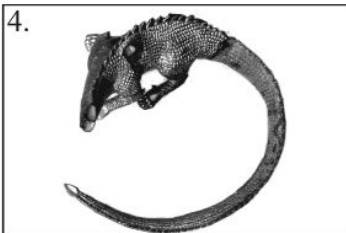
1. Clean all the edges that are to be glued. Use a scalpel to scratch a crosshatch pattern on BOTH connecting edges. This enhances the holding power of the glue. Check that the legs fit snugly into the body.



2. Glue legs into position with 5 minute Epoxy Resin Glue. Follow the Glue manufacturers instructions for application and drying times. Glue not included. Leave until completely dry.



3. While waiting for the legs to dry, start glueing the head together. Glue the tongue into top of top skull first. Then add the lower jaw. Glue is to be applied to both sides of the tongue. Finally add the ears to the top of the skull. Hold firmly until dry.



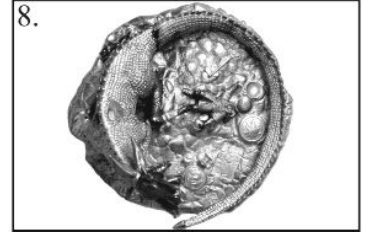
4. Next attach the tail to the body, remember to crosshatch the connecting ends first. Then leave to dry. This may take a while.



5. Attaching the Dwarves to the base: The winged helmeted dwarf will require a small amount of clipping and filing to remove about half of the wing shown being filed on the fifth illustration.



6. Now carefully position the bodies of the dwarves on the base. The winged helmet dwarf should rest his hands on two raised rocks so his body fits into the depression between those rocks. The other dwarf is placed near the edge of the base beside one of the shields. Follow the white outlines on the sixth illustration. Glue the figures and let dry.



7. Next glue the completed head to the Dragons neck. Hold firmly and make sure the glue that holds the head together has set first.

8. Position the feet of the dragon into the depressions on the base and glue the body to the base. It is easier to glue the body to the base first before adding the wings. Let the glue set.

9. Treasure Chest. Apply a little glue to the back connecting edge of the chest (the front has more decoration, as seen in the ninth illustration.) Carefully position and stick the lid to the chest body. Note: if you have the lid closed too much it will make painting the gold more difficult so leave it well ajar.

10. Glue the completed chest to the base where illustrated in No.10.

11. Attach the inner wing to the body first and let dry. Make sure it fits snugly to the hole in the dragons shoulder.

12. Glue the outer wing to the other shoulder and let dry. Your Dragon is now ready for priming and painting. You may decide to undercoat and paint the base before applying the dragon to it. If you do make sure you clean ALL sections of the metal that will be glued or the dragon will not stick effectively.

TIP: Use a hot hairdryer to speed up the glue drying time. Alternatively use 'Loctite' superglue GEL for faster assembly but it is weaker than the epoxy glue.

mithril
MINIATURES

Kilnamartyra, Macroom, Co. Cork, Ireland.
Tel: +353 (0)26 40222 -
E-mail: info@mithril.ie - Web: www.mithril.ie

